

PART OF THE NW 1/4, OF SEC. 21, T.7N., R.2W., S.L.B. & M.

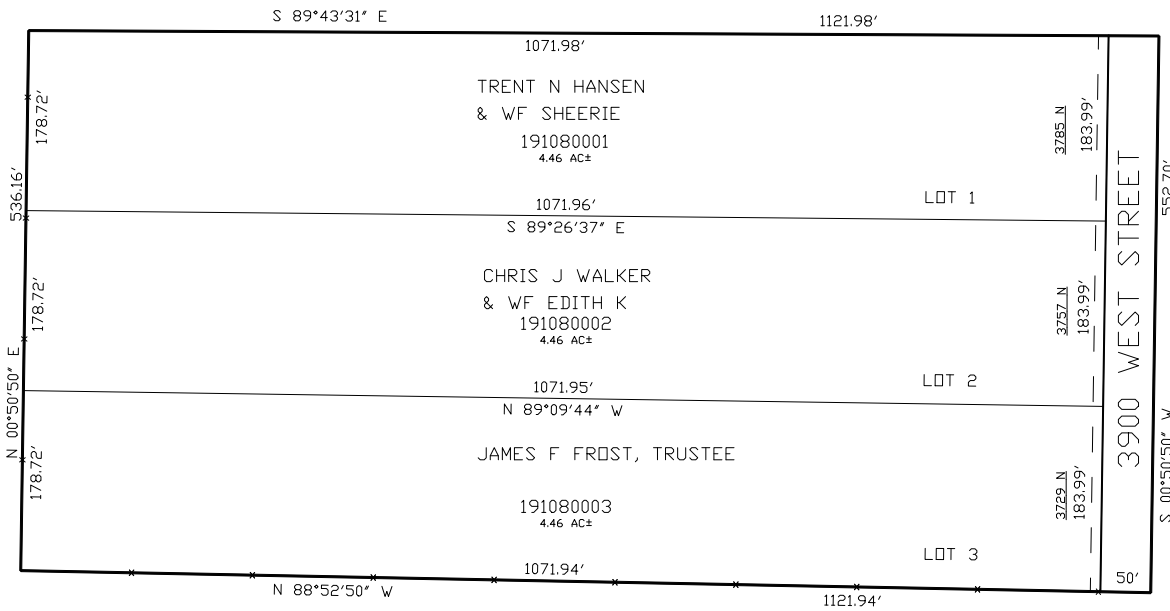
ARCHIE HUNT SUBDIVISION

IN WEBER COUNTY

SCALE 1" = 100'

TAXING UNIT: 19

SEE PAGE 9



SEE PAGE 9

SEE PAGE 9

SEE PAGE 9

10' UTILITY & DRAINAGE EASEMENTS EACH SIDE OF PROPERTY LINES AS INDICATED BY DASHED LINES EXCEPT AS OTHERWISE SHOWN.

FOR COMPLETE ENG DATA SEE ORIGINAL DEDICATION PLAT IN BOOK 41, PAGE 32 OF RECORDS.